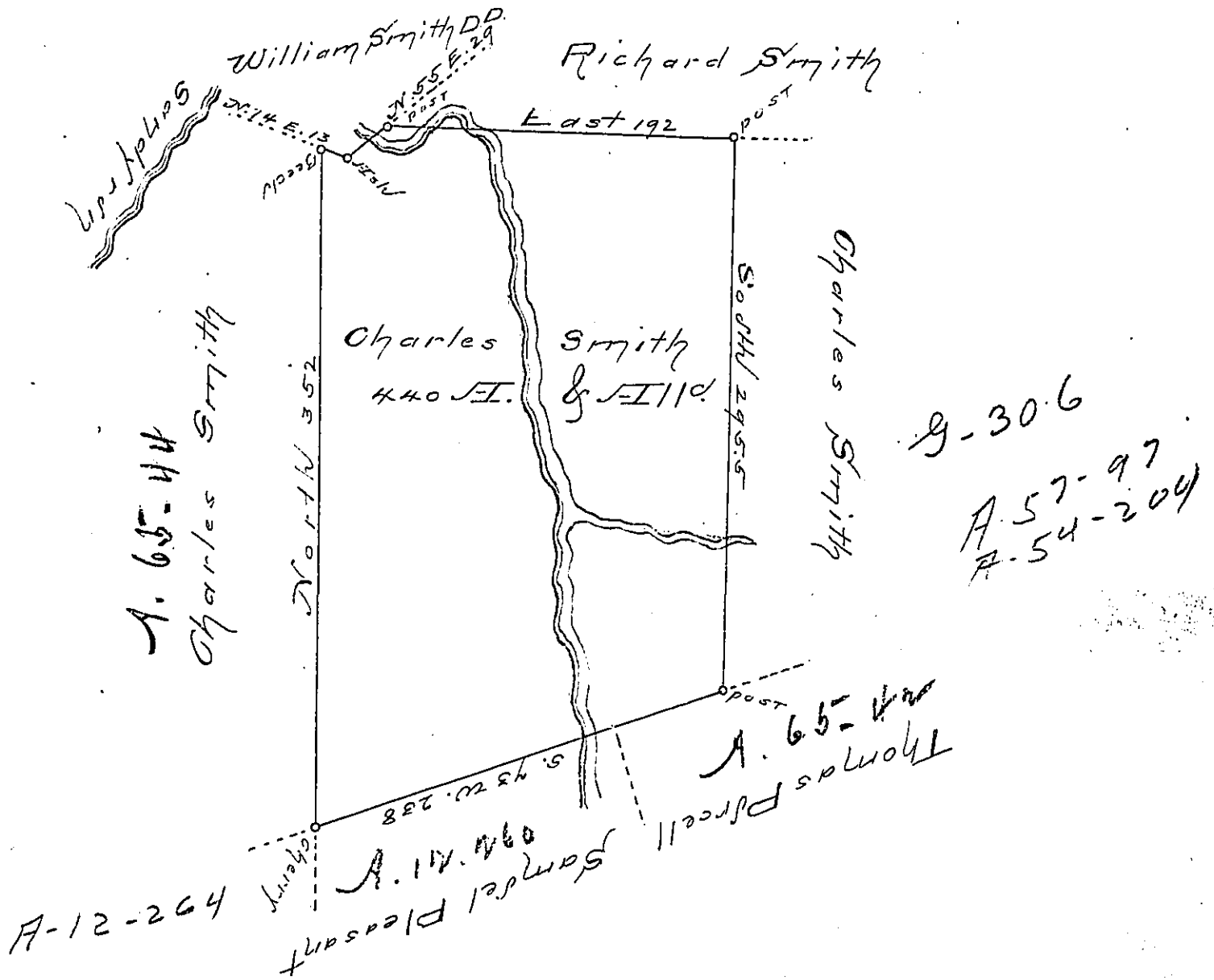


9-20-186



Situated in the forks of the South branch of  
 Little Conemaugh and Sandy run in the Town-  
 ships of Conemaugh & Cambria in Cambria  
 County And Surveyed the — day of June  
 1794 by George Woods jun. Deputy Surveyor  
 in pursuance of a Warrant dated the  
 30 day of August 1793.

Examined the 30<sup>th</sup> day of June 1808.

Samuel Cochran Ed. } William O'Keefe  
 Surveyor General } Des.

IN TESTIMONY that the above is a copy of the original remaining on file in the  
 Department of Internal Affairs of Pennsylvania, made con-  
 formably to an Act of Assembly approved the 16th day of  
 February, 1833. I have hereunto set my Hand and caused  
 the Seal of said Department to be affixed at Harrisburg, this

— fifth — day of — May — 1896.

James Watta  
 Secretary of Internal Affairs.